

L810 Mini PCIe LTE Module

Perfect Wireless Experience

 5 Modes

 11 Frequencies

 50Mbps LTE Uplink

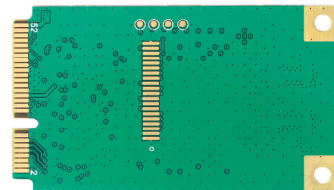
 300Mbps LTE Downlink

 Win 8.1/10 Android 4.2
above Linux 2.6.18 above

 VoLTE¹

L810 Mini PCIe module is a Mini PCIe-packed LTE wireless communication module which supports 11 frequencies from LTE-FDD/LTE-TDD/WCDMA/TD-SCDMA/GSM. The module supports LTE network based on the FDD/TDD and the 3G fallback.

The module's network connection speed can reach Cat6 300Mbps in the downloading speed and 50Mbps in the uploading speed, which makes it suitable to the mobile network. L810 Mini PCIe can be widely used in security, gateway etc.



Available For

- China
- Part of APAC
- Europe



L810 Mini PCIe LTE Module

Perfect Wireless Experience

L810-Mini PCIe LTE Module Technical Specifications

Product Features

- LTE FDD: Band 1,3,5,7,8,20
- LTE TDD: Band 38,39,40,41
- WCDMA: Band 1,8
- TD-SCDMA: Band 34,39
- GSM/GPRS/EDGE: 900/1800MHz
- Mini PCIe 30.0×50.95×3.0mm
- Current Consumption: 5mA@sleep mode(DRX9)
- RX Sensitivity
 - LTE FDD: -99dBm ~ -102dBm
 - LTE TDD: -99.5dBm ~ -100dBm
 - TD-SCDMA: -109.5dBm
- WCDMA: -109dBm
- GSM: -108dBm
- TX Power
 - LTE FDD: 22.5dBm
 - LTE TDD: 22.5dBm
 - WCDMA: 22.5dBm
 - TD-SCDMA: 22.5dBm
 - GSM: 900 32.5dBm
 - DCS: 1800 29.5dBm
- AT Command Set: FIBOCOM proprietary AT commands/GSM 07.05/GSM 07.07

Data

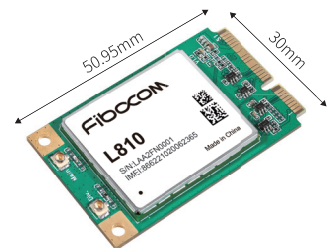
- LTE FDD : Cat 6 (300Mbps DL, 50Mbps UL)
- LTE TDD : Cat 4 (112Mbps DL, 10Mbps UL)
- UMTS/HSPA:
 - DC-HSDPA 42Mbps(Cat24) ;
 - HSUPA 5.76Mbps (Cat6)
- TD-SCDMA : 2.8Mbps DL, 2.2Mbps UL
- GSM 3GPP release 7:
 - EDGE multi-slot class 33 (296kbps DL, 236.8kbps UL)
 - GPRS multi-slot class 33 (107kbps DL, 85.6kbps UL)
- MUX: Basic Mode
- SMS: MO/MT Text and PDU modes
- Cell broadcast

Interfaces

- PCM voice
- 1 x USB 2.0
- 1 x UART
- 1 x W_DISABLE
- 1 x LPG

Drivers

- Win 8.1/10
- Android 4.2 above
- Linux 2.6.18 above



Approvals

- RoHS
- CCC
- SRRC
- NAL
- CE
- GCF²

1=Supports in future 2=In Progress

Copyright © 1999-2015 Fibocom Wireless Inc. | Subject to changes in technology, design and availability | E-mail : market@fibocom.com | Tel : +86 755-2673 3555